

Gallery Happenings

Serena Supplee at Gallery Moab

by Deborah McDermott

Gallery Moab is again pleased to showcase the work of Serena Supplee. For the month of October, her Canyonlands-inspired watercolor and oil paintings will grace the Guest Artist wall. Serena Supplee is an artist who has “tuned in” to the spirit of the rocks, sky, and trees. Her paintings are not only colorful and animated, but they also depict specific places on the Colorado Plateau that are imaginatively conceived and painted with a “passionate palette.”



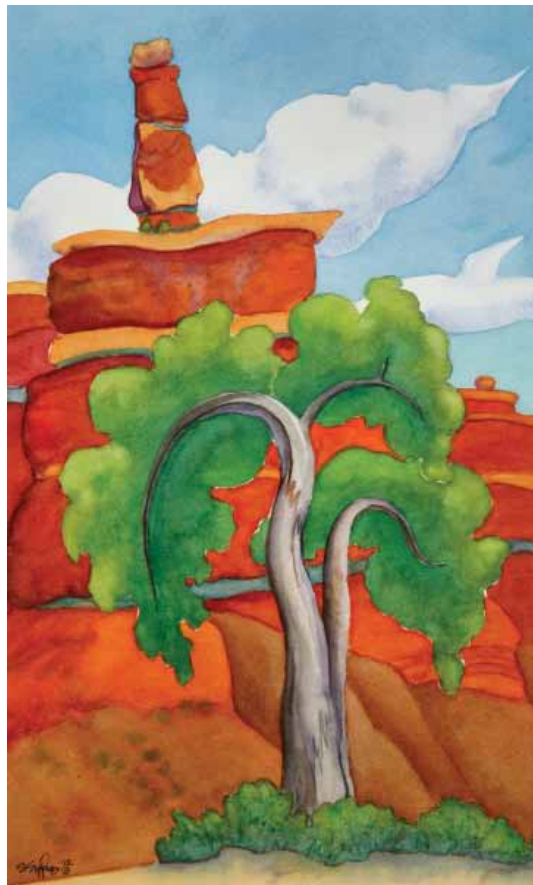
Serena has roamed extensively over the Colorado Plateau since 1980, sometimes by 4 WD, and other times by her boat on the Colorado, Green, or San Juan Rivers. She worked for many years as a river guide, so she knows the landscape from top to bottom. “I love to peruse the great outdoors, to see what catches my eye, a spot that “speaks to me,” then sit quietly and draw with a pencil. By spending time concentrating on the scene before me, drawing the place imprints changing shadows and colors in my mind. I choose to work from my sketches rather than photos to give my imagination more reign. My paintings are my eye, not the camera’s eye.”



Serena has a new book in publication. Grand Canyon Calling features pencil sketches and comments adjacent to her large oil paintings. But the word “sketches” seems an understatement for some of more detailed drawings that are reproduced in the book. These observational drawings, many including grid lines, are the solid framework for her painted compositions, allowing Serena to improvise color and form.

In March of this year Serena’s art was exhibited at the Museum of Northern Arizona in Flagstaff, where she earned an art degree at Northern Arizona University before moving to Moab. And not too long ago the St. George Art Museum mounted a one-woman exhibit of thirty of Serena’s night paintings, titled “Starry Night.” Serena’s artwork may be most recognized from the more than 100 images she has published as notecards since 1983, and wall calendars since 2008. She has a new selection of 14x18” affordable prints as well as large giclée reproductions for sale on her website. Giclée prints are archival, or fade-resistant ink jet reproductions. Serena’s new book can also be ordered through her website, serenasuree.com.

In March of this year Serena’s art was exhibited at the Museum of Northern Arizona in Flagstaff, where she earned an art degree at Northern Arizona University before moving to Moab. And not too long ago the St. George Art Museum mounted a one-woman exhibit of thirty of Serena’s night paintings, titled “Starry Night.” Serena’s artwork may be most recognized from the more than 100 images she has published as notecards since 1983, and wall calendars since 2008. She has a new selection of 14x18” affordable prints as well as large giclée reproductions for sale on her website. Giclée prints are archival, or fade-resistant ink jet reproductions. Serena’s new book can also be ordered through her website, serenasuree.com.



Gallery Moab will host a reception for Serena Supplee during ArtWalk on Saturday, October 13 from 5-8 pm. The gallery is located at 87 North Main Street. Join us in celebrating this colorful and accomplished artist.



Community Artist in the Parks

The Southeast Utah Group of parks is now accepting applications for the 2019 Community Artist in the Parks (CAIP) program.

Created in 2009, the CAIP program highlights the connection between local artists and the surrounding landscape, particularly Arches and Canyonlands national parks and Hovenweep and Natural Bridges national monuments.

The selected artist spends a minimum of 24 hours each month, April through October, creating original works of art in the participating parks and sharing inspiration and the creative process with visitors from around the world. The artist’s work may also be sold at participating parks’ cooperating association bookstores.

Artists must be residents of Grand or San Juan counties in Utah, or Montezuma County in Colorado.

The deadline to submit applications is October 20, 2018.

For more program details and application information, visit go.nps.gov/CAIP.

Submit questions and applications to Karen Garthwait, interpretive specialist, at 435-719-2142 or via email.

Interested artists may also contact Chad Niehaus, Community Artist in the Parks liaison, for more information at 435-259-9314 or via email.

RED ROCK ARTS FESTIVAL EVENTS

CELEBRATING LAND-INSPIRED ART

MON, OCT. 8 - SAT, OCT. 13, 2018

WWW.REDROCKARTSFESTIVAL.COM

MON, OCT. 8 • 6PM • KICK-OFF EVENT
 Jack Cimo Classical Guitar Concert &
 Meet the Plein Air Artists Reception



TUES, OCT. 9 - SAT, OCT. 13 • 12-9PM
 Plein Air Landscape Paintings Art Display & Sale

TUES, OCT. 9 AN EVENING OF DARK SKIES
 7pm Nocturne Painting Competition Reception
 7:30pm Dark Skies Storytelling with Boldly Went



WEDS, OCT. 10 • 8PM • JUST FOR FUN!
 Sketch Crawl + Pub Crawl with Katrina Lund
 Meet @ the MARC, Visit 98 Center, Eddie McStiff's & Woody's

FRI, OCT. 12 • 7PM • SEE ALL THE PAINTINGS!
 Arches Painting Competition Reception & Open Mic



ALL EVENTS LOCATED AT THE MOAB ARTS & REC CENTER • 111 E 100 N