

# GALLERY HAPPENINGS

## Bighorn Gallery

Bighorn Gallery at Dead Horse Point State Park is proud to showcase a two-artist show called "Points of View" from September 5th – October 31st. Local artists Sandi Snead and Margie Lopez Read are passionate about landscapes. Their show features new paintings of the desert southwest as well as other places they love. Works on display include paintings done in oils, pastels and watercolors: created both in the studio and en plein air.

Margie Lopez Read paints in oils, pastels and watercolors. She expresses herself through a combination of realism and impressionism. Her passion for hiking and painting on location are revealed through her thoughtful color choices and exuberant brushwork. "A good painting comes out of personal experience and emotion." Read's work invites you in and tells the viewer a story. Margie uses art as a means



*Dead Horse Storm,*  
by Margie Lopez Read

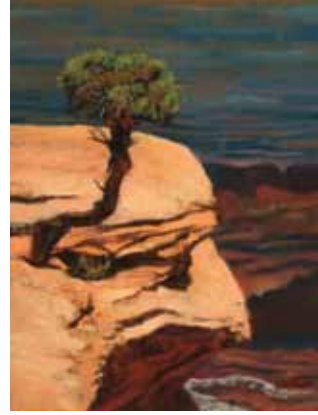


*PJ Embrace,*  
by Margie Lopez Read

"I paint what moves me. Usually that involves wonderful light, alluring shapes and shadows." Snead infuses warmth and color to emphasize her visual statement while simultaneously provoking a personal and emotional response. She is influenced by the imaginative elements in Surrealism and the ardent, glowing intensity and sensuality that the old masters painted. Find out more about

to raise funds for programs that improve the condition of our world through her donation art. Find out more about Margie and donation art at [www.margies-art.com](http://www.margies-art.com)

Sandi Snead paints in oils and pastels and describes her work as dramatic and energetic. Some might say those qualities describe the artist herself.



*Above it all, by Sandi Snead*

Sandi at [www.sandi-snead.pixels.com](http://www.sandi-snead.pixels.com).

Art inspired by life. "Points of View" reveals the way these artists see and interpret the world. During the eight-week exhibition, paintings will be available for purchase as well as prints and note cards.



*Spirit by Sandi Snead*

Dead Horse Point is located nine miles north of Moab on US 191 and 23 miles south on SR 313. The visitor center and Bighorn Gallery are open daily from 8am-6pm. Park admission is \$15 per vehicle for three days. For more information, please contact the park at 435-259-2614.

## October at Gallery Moab

Gallery Moab's October Guest Artist is Nancy Lewis, an oil painter, watercolorist, and pastel painter from Palisade, Colorado. Nancy has always been in awe of the natural world's beauty and magic. Living in the high desert town of Grand Junction, Colorado provides Nancy with ample opportunities to paint outside as a plein air artist. She can often be seen painting under the shadows of the Colorado Monument, along the shores of the Colorado river, in the vineyards of Palisade, or on the sidewalks of the various Grand Valley farmer's markets.

Nancy's life-long connection with nature's beauty and awe is evidenced by the colors, textures, and composition she brings to her work. "I believe an important piece of art stimulates curiosity and thought and allows us to connect, consciously or subconsciously, with our emotions and memories," Nancy explains. Nancy's work is in private collections in the United States, Mexico, Canada, Argentina, Colombia, and Peru. She has also shown her work in juried shows at the Cleveland Institute of Art, and the High Plein Air Art Festival exhibited at Byers-Evans Museum. She recently co-authored and published a book of photographs, "The Women of Friendship Bridge in Guatemala."



*Zion Mid Day by Nancy Lewis*

In 2006, Nancy's love for adventure and her life-long appreciation for nature's immense beauty culminated in what would become an epic and life-changing journey. Accompanied by her husband, Nancy set out from Inuvik, Canada on a bicycle tour that would eventually lead her 14,000 miles south to the port city of Puerto Montt, Chile. Over the course of their three-year journey, Nancy used paint, pen, pencil, and camera to capture the complexity and beauty of the ever-changing landscapes, seasons and cultures. Her subjects ranged from the stark, desolate beauty of high Andes volcanic mountains to the colorful Central America markets. Samples of her work from this period can be seen at [www.nancylewisart.com](http://www.nancylewisart.com). Throughout the trip, Nancy and her husband maintained a blog that captured both the magic and tribulations that the 3-year, cross-continent bicycle trip

offered. Their blog can be found at [www.hobobiker.com](http://www.hobobiker.com).

For the last 25 years, Nancy has enjoyed significant success as a graphic artist, having worked as a painter, Web designer, and computer-aided designer and drafter (CADD) on large-scale civil design projects. Throughout her

career, Nancy has also worked as an educator, teaching CADD, 3D modeling, digital illustration, and photo manipulation. She has also taught painting at the Fairmont Art Center, the Professional Training Center, Arapahoe Community College, and Colorado Institute of Art.



by Nancy Lewis

Please join gallery members for a reception for Nancy Lewis during the October Artwalk, October 14th, 6-9 pm. Gallery Moab is located at 87 North Main Street, and online at [gallerymoab.com](http://gallerymoab.com).

## Artist in the Parks Program



The Southeast Utah Group of parks is now accepting applications for the 2018 Community Artist in the Parks (CAIP) program.

Created in 2009, the CAIP program highlights the connection between local artists and the surrounding landscape, particularly Arches and Canyonlands National

Parks and Hovenweep and Natural Bridges National Monuments.

The selected artist spends a minimum of twenty-four hours each month, April through October, creating original works of art in the participating parks and sharing inspiration and the creative process with visitors from around the world. The artist's work may also be sold at participating parks' cooperating association bookstores.

Artists must be residents of Grand or San Juan counties in Utah, or Montezuma County in Colorado. The deadline to submit applications is October 20, 2017. For more program details and application information, go to <https://go.nps.gov/CAIP>. Submit questions and applications to Karen Garthwait, Interpretive Specialist, at 435-719-2142 or via e-mail at [karen\\_garthwait@nps.gov](mailto:karen_garthwait@nps.gov).

Interested artists may also contact Chad Niehaus, Community Artist in the Parks Liaison, for more information at 435-259-9314 or via e-mail at [chad@moabart.com](mailto:chad@moabart.com).

This year's Community Artist in the Parks is San Juan County resident Anthony Lott. Born in Salt Lake City, UT, Anthony spent college weekends backpacking in southeastern Utah canyons. He and his family now live in Bluff, and he teaches drawing, painting, ceramics,

art appreciation, and emergency medical response at the Blanding campus of Utah State University.

Anthony has been surprised to find that, "Folks seem to be enthusiastic about expressing how fantastic the landscape is out here." After meeting Anthony on the Cave Springs Trail in Canyonlands, a visitor commented, "When you're hiking along and see an artist painting there, it's totally unexpected... and yet, it also kind of makes sense seeing how beautiful these places are."

### October 5

Join Community Artist in the Parks Anthony Lott at Canyonlands National Park for this free workshop. Bring your art supplies, or just come to chat. Bring water, sunscreen, and a hat.

Location: Island in the Sky Visitor Center: 10am - 1pm

### October 6

Join Community Artist in the Parks Anthony Lott at Canyonlands National Park for this free workshop. Bring your art supplies, or just come to chat. Bring water, sunscreen, and a hat.

Location: Upheaval Dome First Overlook: 10am - 3pm

### October 20

Join Community Artist in the Parks Anthony Lott at Natural Bridges National Monument for this free workshop. Bring your art supplies, or just come to chat. Bring water, sunscreen, and a hat.

Location: Visitor Center: 10:30 am - 1:30pm

Roadside Draw/Paint (location TBD;

check sign at Visitor Center): 2pm - 5pm

### October 21

Join Community Artist in the Parks Anthony Lott at Natural Bridges National Monument for this free workshop. Bring your art supplies, or just come to chat. Bring water, sunscreen, and a hat.

Location: Backcountry Paint/Draw (location TBD) 8am - 5pm

# GALLERY MOAB LCA

## Art by Local Artists

### Open Daily Noon - 9pm



*"Through the Portal"*  
by Carolyn Tibbetts

87 N. MAIN - MOAB, UT  
435-355-0024