

Gallery Happenings

Gallery Moab Celebrates Birds

by Thea Nordling

Birds are endlessly fascinating! They grace the world with a rich kaleidoscope of different colors, sizes, and shapes. The miracles of bird song, flight and migration have inspired many a poem through the centuries. No wonder birding is growing in popularity. It's an activity accessible to people of all ages and abilities, and a wonderful way to get outside year-round to connect with nature. Even during the chill of winter thousands of bird lovers around the world venture out to count birds during the Christmas Bird Count and the Great Backyard Bird Count, collecting data to help better understand and protect birds.

In February Gallery Moab's member artists are presenting "For the Love of Birds," a show inspired by the beauty and wonder our feathered friends bring to our lives. Several of the artists are displaying works in a variety of mediums. Nick Eason, an accomplished birder and wood



Canyon Wren by Deborah McDermott

carver, is the featured artist. Eason says that this passion started over 50 years ago with picking up a book on whittling. He recounts, "What started with a pocket knife and a few scraps of wood grew into a hobby that lasted through a 30 year career with the National Park Service. That hobby since became a full-time commitment in retirement."

Eason's work often flows directly from many years of observing birds and other wildlife in their natural settings. His work has evolved into

a simplified style which captures the key forms and behavioral characteristics of his subjects, blending the smooth curves and subtle lines of the natural world with the unique characteristics of the hardwoods he prefers to carve. More recently, he has expanded his style to include carved birds painted with acrylic paint and finished in a weathered antique style.

Eason describes his process as progressing from personal observation and research, through a quick clay "sketch", and then moving on to tools which may range from chisel and mallet to grinders and a chainsaw. He is motivated by the challenges of researching a new piece, finding the right material to match the concept, and following through to a unique, one-of-a-kind wood sculpture. His works have won a number of awards, and can be found in private collections across the country.



Nick Eason



White breasted nuthatch by Thea Nordling



The Guardian by Carolyn Tibbetts



During the first Art Walk of the year on Friday February 7, the gallery is hosting a reception from 5:00 to 8:00 p.m. Come meet Eason, mingle with other artists and art lovers, and enjoy refreshments and creative camaraderie. See how many birds you can spot in the gallery!

Gallery Moab is a cooperative owned and operated by local artists inspired by our unique landscape and nature. We offer original fine art and artisan crafts in a diversity of mediums, styles, and prices. It's a great place to find that perfect gift or memento of your visit.

Open Sunday & Monday 12:00 – 3:00 p.m.

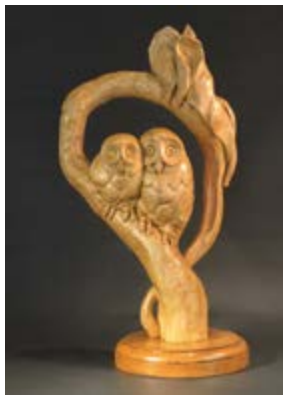
Tuesday through Saturday 12:00 – 6:00 p.m.

Call 435-220-0891 and we will gladly open by appointment during other hours.

We look forward to your visit!

Gallery Moab
59 S. Main Street #1
435-355-0024
gallerymoab.com

Visit us on Facebook and Instagram.



By the Light of the Moon by Nick Eason

Article Archive

To find previous Moab Happenings articles go to moabhappenings.com and click on the Article Archive. It will take you to previous copies of complete Moab Happenings as well as previous articles by topic.

ERRACTICS, A Portfolio of Prints from Utah Artists on Display at the Grand County Library in Moab

from the Utah Division of Arts & Museums

Artists creatively explore their relationship to the Utah landscape.

"A glacial erratic is a glacially deposited rocks which differ from size and type native to the area which it rests. They are formed by glacial erosion, resulting from the movement of ice. Glaciers crack, gouge, or thrust pieces of bedrock and carry them, often over hundreds of miles. Erratics take their name from the Latin word errare, meaning 'to wander.' They are hugely significant, they mark the path of prehistoric glacial movements as they can be traced back to their parent bedrock."

The artists in this exhibit conceptualized glacial erratic as a metaphor by exploring their relationship to Utah. How did you come to live in Utah? How has this varied landscape shaped you personally? How has your personal "bedrock" informed your response to place?

Saltgrass Printmakers is non-profit open print shop located in Salt Lake City, Utah. Their goal is to support and promote printmaking as a first-class member of the fine-art community by providing education programs open to the public, open community access to professional-grade printmaking facilities and supporting collaborative opportunities for artists and for the public. Saltgrass Printmakers was founded by Erik Brunvand, Sandy Brunvand and Stefanie Dykes.

Participating artists: Gary Barton, Erik Brunvand, Haylee Canonico, Rob Chipman, Aloe Corry, Robert DeGross, Jim Despain, Justin Diggle, Stefanie Dykes, Michael Gaffney, Trishelle Jeffery, Abraham Kimball, Wayne Kimball, Adam Larsen, Holland Larsen, Amanda Lee, Abraham McCowan, Deborah McDermott, Manie Powers-Torrey, Kathy Puzey, James Rees, Andrew Rice, K. Stevenson, Mary Toscano.

"Erratics" will be displayed at Grand County Public Library, 257 E. Center St., Moab from February 4 to March 26. Library hours are Monday–Friday 9am–8pm, Saturday 9am–5pm. Accompanying educational materials are

available. For more information on viewing the exhibition, please call (435) 259-1111 or go to www.grandcountyutah.net/286/Library.

Utah Arts & Museums' Traveling Exhibit Program is a statewide outreach program that provides schools, museums, libraries, and community galleries with the opportunity to bring curated exhibitions to their community. This program is supported in part by a grant from the National Endowment



Red Rock and River by Bob Chipman

for the Arts. For more information on participating in the program, please contact Fletcher Booth at fbooth@utah.gov

Utah Arts & Museums is a division of the Utah Department of Cultural & Community Engagement. Arts & Museums provides funding, education, and technical services to individuals and organizations statewide so that all Utahans, regardless of race, gender, ethnicity or economic status, can access, understand, and receive the benefits of arts and culture. Additional information on the programs and services can be found at artsandmuseums.utah.gov.



High Desert Dry Dock by Adam Larsen