

Gallery Happenings

December at Gallery Moab

by Thea Nordling

Give the gift of art this holiday season! Moab's cooperative gallery is the perfect place to shop for original art and artisan crafts in a variety of mediums, styles and prices, all made by talented local artists.

Ceramic artist Barbara Gregoire is exhibiting a selection of recent work for her show, "Conversations with Clay," through the month of December. Her career in clay spans more than 40 years, during which she has studied ancient Japanese techniques at workshops with renowned ceramic artists. Over the past year she has experimented with three distinct clay bodies, developing her own approach to creating traditional ceramics.

The art of glazing has always been a priority for Gregoire. She says, "For me, glazing is what brings out the identity of the clay you are working with. It always begins with a conversation – with the traditions of the past, with the peculiarities of the clay you are working with, which helps me choose the type of glaze that brings it all to life."



Ceramics by Barbara Gregoire

She explains, "Porcelain, for example, is so tight and solid that the glaze has very little to react to, which makes it the perfect medium for Shino." Her Shino pieces have a unique orange and smoky black spotting that is a result of carbon trapping during the firing process. "You never know what's going to come out of the kiln. That's the wabi-sabi factor that makes Shino tea cups a big hit in traditional tea ceremonies. Black clay on the other hand, is more porous, almost like a sponge in the way it soaks up the glaze. Only certain glazes will work with it." She uses a modern twist on another traditional Japanese technique called Kohiki, resulting in a bold contemporary take on an ancient tradition, full of contrast and motion.

Gregoire is also displaying work made from a third clay body. "Stoneware isn't as finicky as porcelain. It holds its form better and there is enough iron in the clay body to give the glaze some depth," she says. "This allows me to experiment with multiple sprayings of different glazes, even mixing matte and glossy glazes."

Examples of Gregoire's work are on display along with some visual samples and explanations of the different clay bodies and the glazes she works with. She says, "For me, glazing is not just a pretty coating you put on pottery; it's a tradition that stretches back centuries. To add our own modern twists on ancient techniques is a way of continuing the never-ending conversation we've always had with clay."

An open reception for Gregoire will be held on December 9th, from 5pm to 8pm, at Gallery Moab.

We welcome Jess Hough as our newest member artist! She creates delicately detailed intaglio prints inspired by our desert landscape using a homemade printing press she built from reclaimed materials. As the 2023 Community Artist in Parks she demonstrated her printmaking process on site for visitors to our southeast Utah national parks.



Print by Jess Hough



Open Sunday & Monday 11 a.m. – 3:00 p.m.; Tuesday through Saturday 11:00 a.m. – 7:00 p.m.

Call 435-220-0891 and we will gladly open by appointment.

One of the artists is always on hand to answer your questions or help you find that perfect gift or memento of your canyon country vacation.

We look forward to your visit!

Gallery Moab LCA

59 South Main Street #1, Moab Utah 84532

435-355-0024 • gallerymoab.com

Visit us on Facebook and Instagram

HOLIDAY SHOPPING
over 100 local artist inspired gifts

» MOAB MADE «

+

Welcoming Our Sister Shop
ar·tee·sian

LOCALLY DESIGNED
apparel • art • jewelry • goods • ornaments

— 82 N MAIN & 87 N MAIN —

Always...Patsy Cline Musical in Grand Junction the Last Weekend in December

by Sharon Sullivan

The Broadway musical *Always...Patsy Cline* is about the late, great country music singer Patsy Cline and her friendship with Louise Seger. A musical theater performance of the show will take place over the New Year's Eve weekend in Grand Junction, when High Desert Opera presents three live performances at the Avalon Theatre, 645 Main St.

"It's basically a two-woman show; an intimate story between Patsy and her friend," said High Desert co-founder Marnie Werner. The musical is set in three places: Seger's kitchen at home, a bar where Cline sings, and on a big stage where the country music legend performs with her band the Bobcats.

Werner and her husband Jim founded High Desert Opera, (HDO) a nonprofit music theater company, in 2002. Jim has performed on Broadway, and is the HDO artistic director, as well as technical director and orchestrator, while Marnie helps out with props and set design. Ten years ago, the company shifted from opera to musical theater to reach a wider audience, said Marnie Werner.

Cline is portrayed by Jeneve Rose Mitchell, who grew up in Crawford, Colorado. At age 15, Mitchell became one of the top 14 contestants on "American Idol."

"Jeneve is a genuine country girl; a cowgirl who also sings country music," Marnie Werner said.

"Jeneve will be singing all of Cline's greatest hits – 27 or 28 songs. Cline had a unique, powerful voice. People love her music."

High Desert Opera is known for featuring live music during its productions. For *Always...Patsy Cline*, the singer's band, the Bobcats, is portrayed by seven local musicians

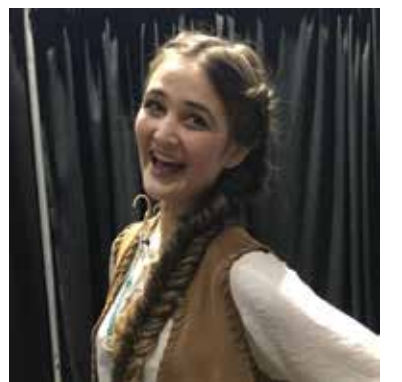
Cline rose to fame in the late 1950s, early 1960s, before dying in a plane crash at the age of 30. She made a huge impact during her brief career, said Werner. It's the

first time High Desert Opera has featured country music, she said.

Louise Seger is portrayed by Sierra Rode, a singer-actress from Grand Junction, who has performed in several High Desert Opera shows. Her character narrates the story, describing how the two women became friends.

Written by Ted Swindley, *Always...Patsy Cline*, will be performed on two evenings, Friday, December 29, and on New Year's Eve, December 31. Additionally, a matinee performance will take place on December 30.

Tickets can be purchased at the Avalon Theatre box office, 645 Main St. in Grand Junction, Thursday through Saturday, from noon to 6 p.m. Tickets can also be found online at: www.avalontheatrej.com. Tickets range from \$15 - \$35, plus processing fees. Discounted tickets are available for seniors and children. www.avalontheatrej.com/upcoming-events/high-desert-opera-presents-alwayspatsy-cline



GALLERY MOAB LCA

featuring
Local Artists & Craftsmen

Tuesday - Saturday 11-7 pm
Sunday & Monday 11-3 pm

By the Light of the Moon
by Nick Eason

59 S. MAIN #1 - MOAB, UT
435-355-0024